



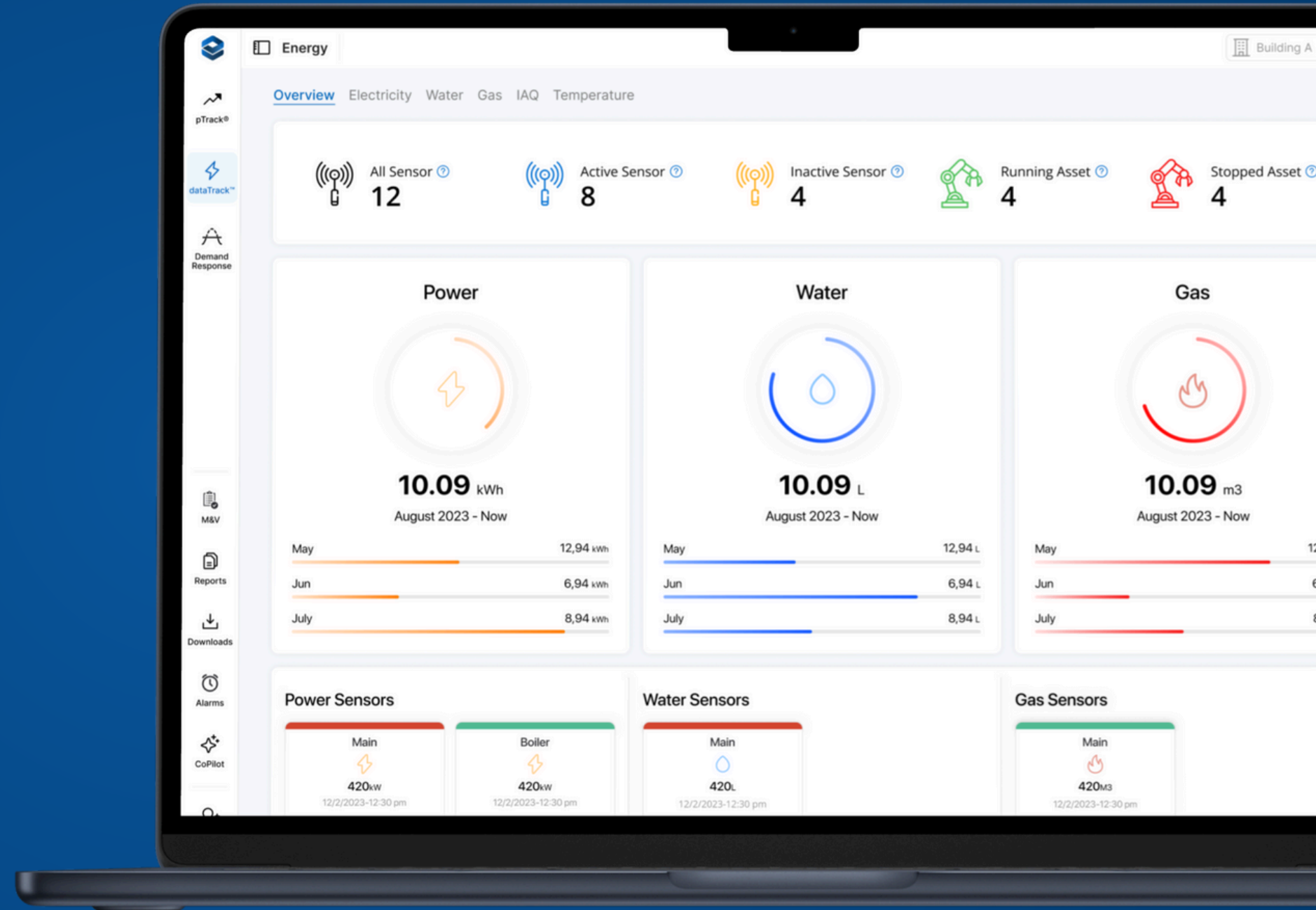
dataTrack™

A Cutting-Edge AI-Powered EMIS



Complete Visibility, Complete Control

Unify all your utility, asset, and production data on a unified platform.



dataTrack™

dataTrack™ is a cutting-edge Energy Management Information System (EMIS) that delivers real-time visibility, AI-powered insights, and cost, consumption, and emissions analytics across all your facilities.

Real-time Monitoring

Don't wait for surprises on your monthly utility bill. With dataTrack™, you're always in control.

Bill Analysis

Simplify your energy bill management across all your facilities so that you can easily identify and measure cost-reduction opportunities.

Production Data Analysis

Link energy and production data so you can pinpoint cost drivers, evaluate your CO2 emission impact, and optimize efficiency.



Energy, Water, and Gas

All your energy, water, and gas data in one place.



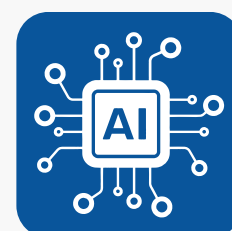
Data Export

Export sensor, emissions, and cost data into CSV formats.



Comparative Reporting

Instantly generate comparative cost and consumption reports



AI Analytics

Get instant analysis on consumption trends and costs.



Anomaly Detection

Group sensors by floor, production lines, buildings, any way you like.



Plug & Play IoT Devices

Easy to install and scale IoT devices to quickly enable real-time monitoring.



Accessible Anywhere

Our responsible portal means you can access it from any device.

AI Energy CoPilot

Leveraging cutting-edge generative AI for energy management.

AI Energy CoPilot

Edgecom Energy's AI Energy CoPilot is one of the first AI solutions trained specifically on industrial energy data. You can leverage its abilities to get insights on energy optimization, emissions reduction, and cost savings. AI Energy CoPilot is built right into dataTrack™, so it can analyze your real-time facility data directly and provide you with tailored and actionable insights.

This powerful digital energy ally can also generate 24-hour production schedules based on energy prices and facility constraints.

Give me a breakdown of the sensor costs last month in a CSV file.



How much energy did production line 1 consumed this month compared to last?



We produced 520,352 L of paint last month, what is my emissions per litre?



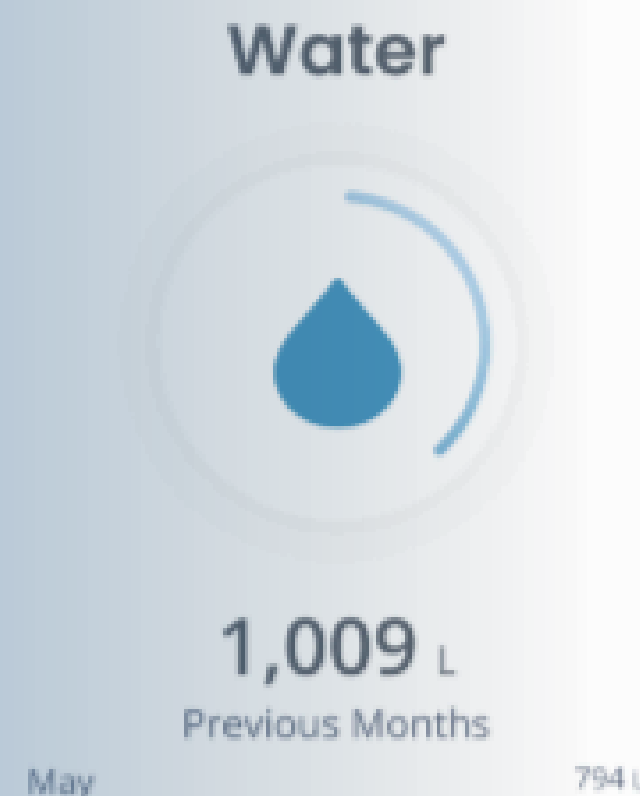
Got a Question? Just Ask.

AI Energy CoPilot transforms how you get your answers. Whether you're in a different department or just need to create a quick report, just ask and you shall receive.

- ✓ Instant analysis at your fingertips
- ✓ API and SCADA Integration
- ✓ Generate and export CSVs
- ✓ Democratize your energy, emission, and financial data

Powerful Features

dataTrack™ helps you minimize energy costs while maximizing production.

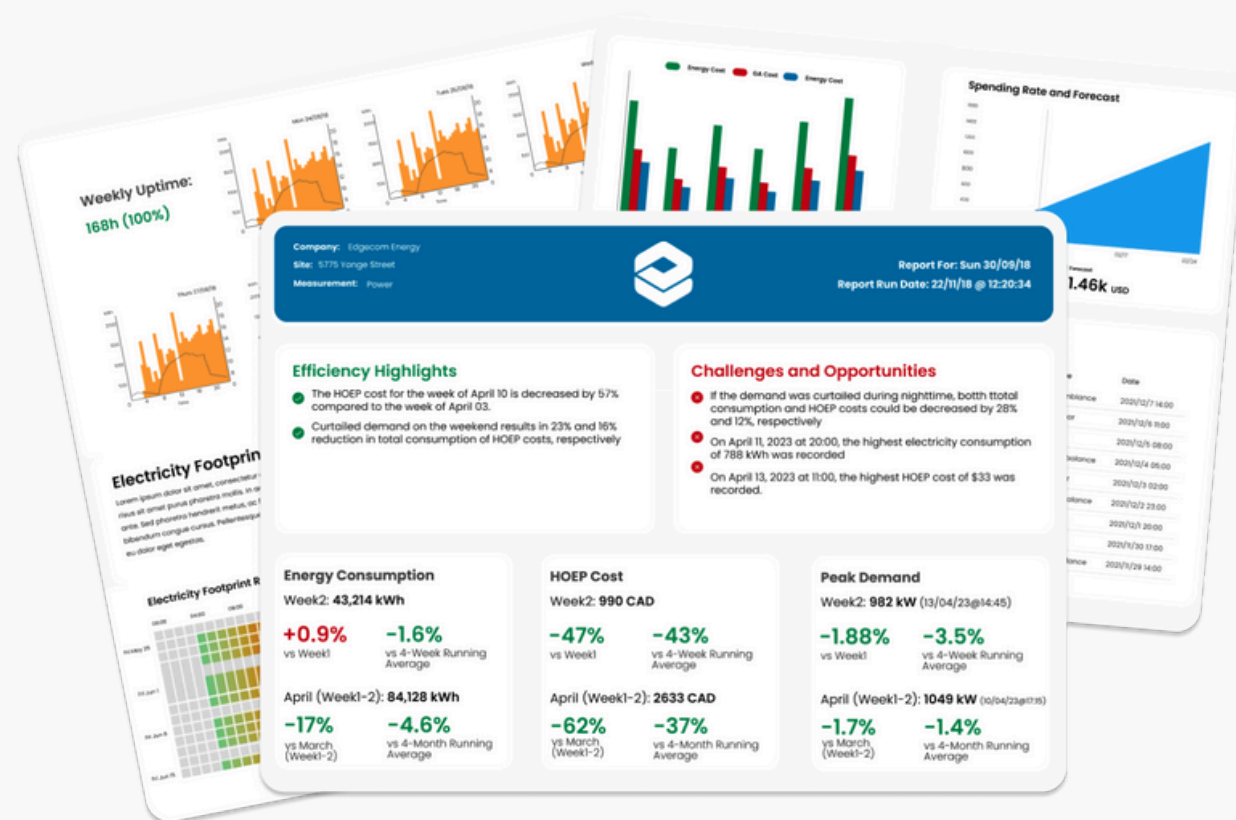
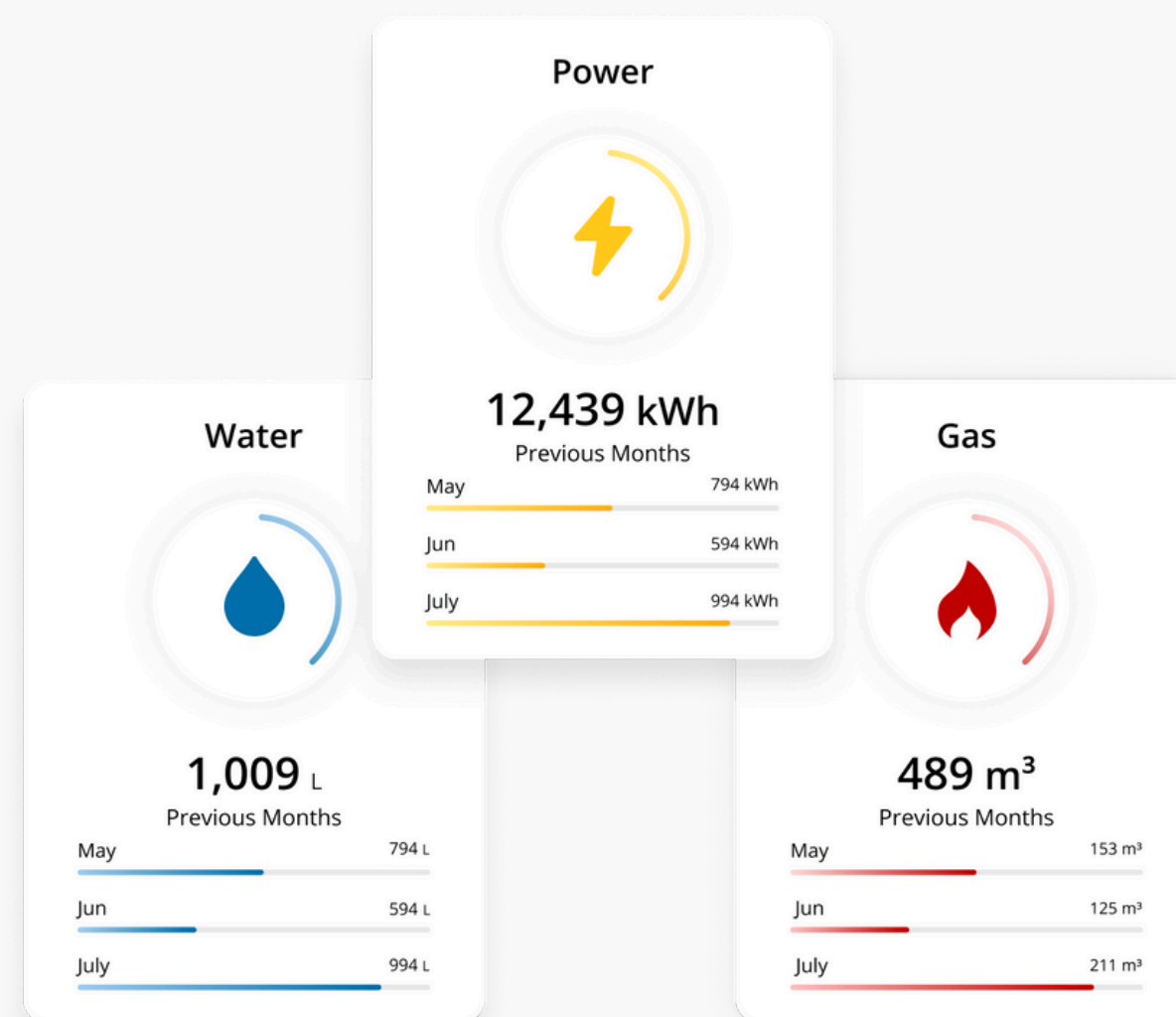


Real-time Monitoring

Don't wait for surprises on your monthly utility bill. With dataTrack™, you're always in control:

- ✓ See utility consumption as it happens.
- ✓ Track real-time energy costs.
- ✓ Identify usage spikes instantly.
- ✓ Make Informed decisions on the spot.

Stay ahead of the curve and turn energy data into savings – all in real time.



Instant Reports

dataTrack™'s integration with AI Energy CoPilot enables instant report generation with energy and cost insights.

- ✓ Compare weekly data
- ✓ Projected monthly consumption and cost
- ✓ Clear data visualization
- ✓ Insights on efficiency opportunities

Custom Alarms

Take control of your building and assets with custom alarms. Set consumption boundaries for individual sensors to ensure everything runs smoothly.

Leverage the consumption and efficiency insights you gained from our reports and smart alarms to stay ahead of any issues that may arise.

Create Alarm

Sensor Name: Shaker (Power)

Time Interval: Real-time power

Current Value: 69 kW

Upper Bound: Upper Bound kW

Lower Bound: Upper Bound kW

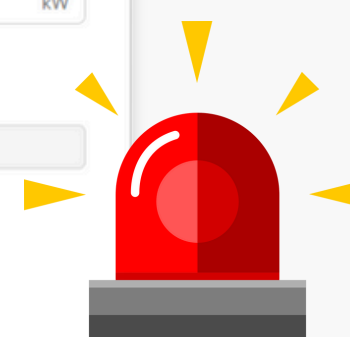
☐ Trigger only once

☒ Notify me by Email

☐ Notify me by SMS

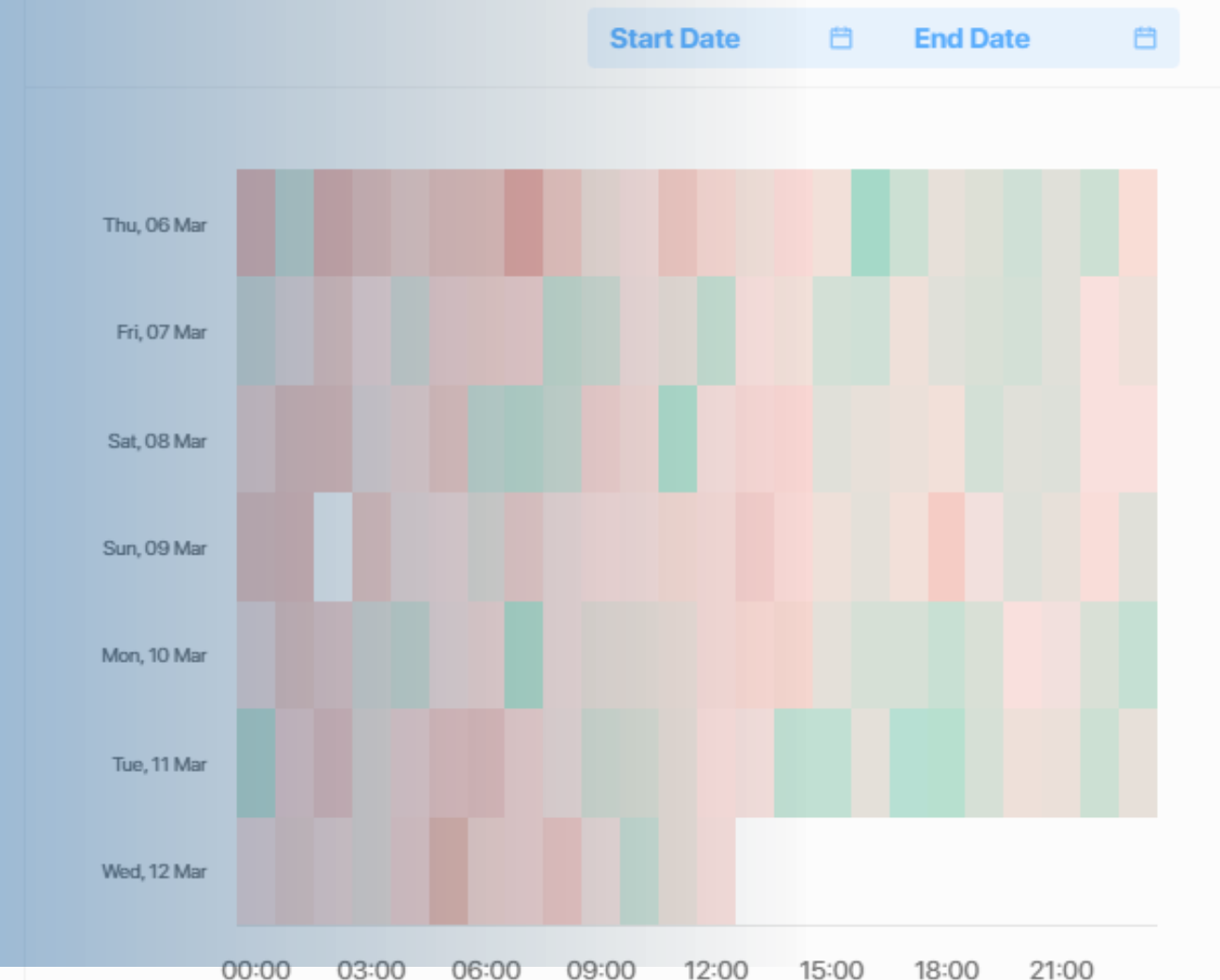
Phone Number

Cancel Create



Powerful Features

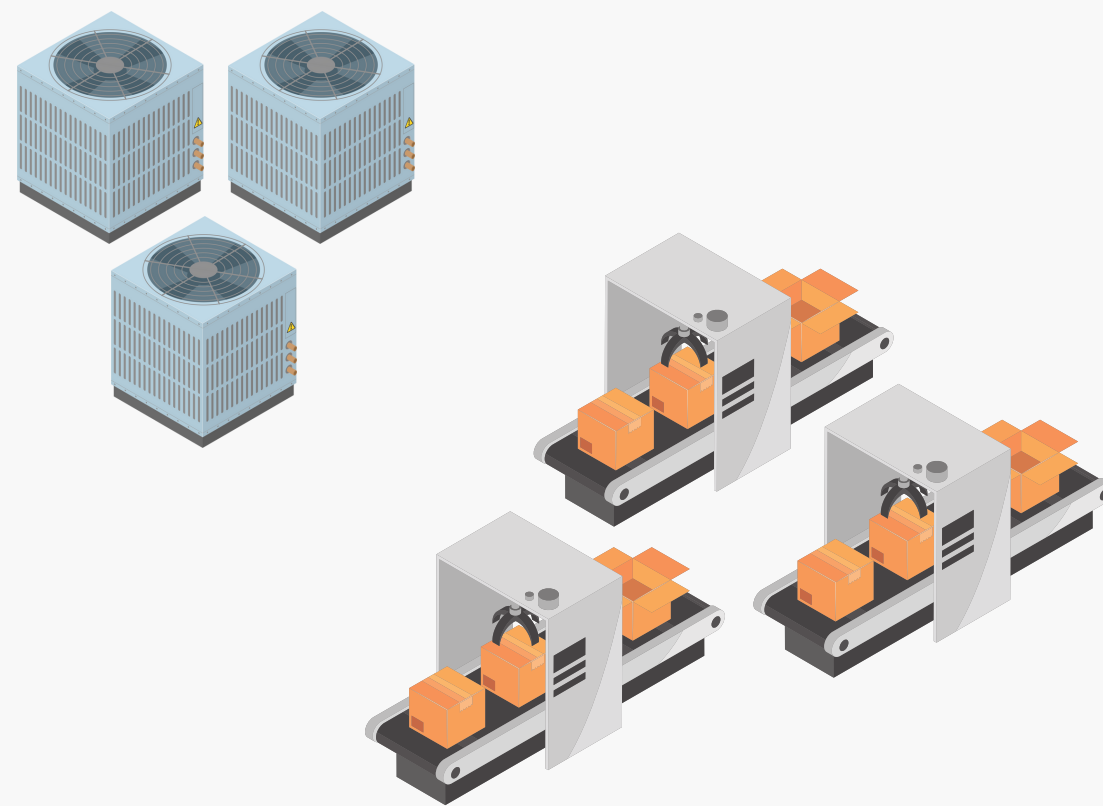
dataTrack™ helps you minimize energy costs while maximizing production.



Sensor Grouping

Group sensors to measure the consumption and costs of a group of assets. Use this feature to create virtual production lines, zones or processes.

- ✓ Measure energy, cost, and CO2 intensity of a production line.
- ✓ View overall performance at a glance and quickly spot irregularities or trends
- ✓ Run group-level analytics to identify inefficiencies



Production Data

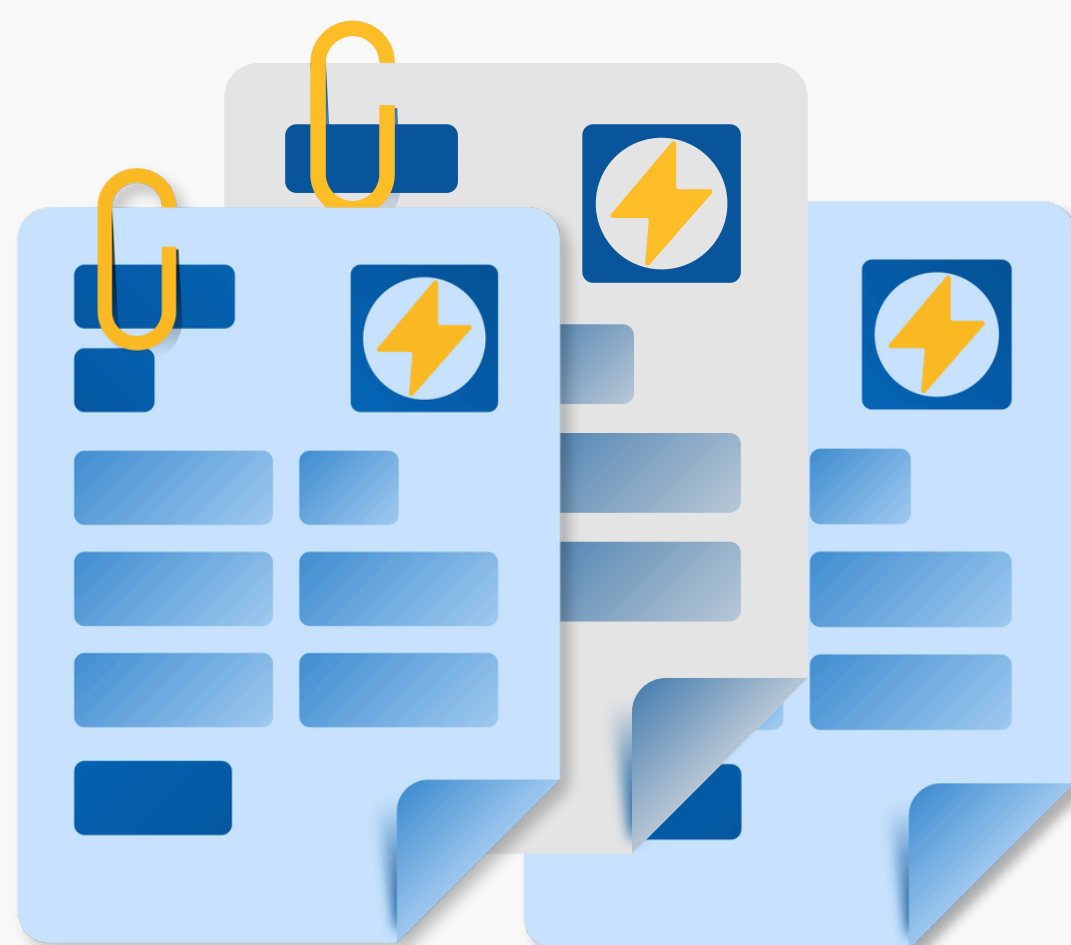
Track and analyze intensity metrics per asset or group over user-defined intervals.

- ✓ Identify the energy cost per unit produced.
- ✓ Identify total CO2 emissions per unit produced.
- ✓ Easy data entry by uploading production amounts via a structured CSV file
- ✓ Compare target versus actual

Bill Analysis

Simplify your energy bill management across all your facilities so that you can easily identify and measure cost-reduction opportunities.

- ✓ Track 12-month trends across all billing line items
- ✓ View daily averaged amounts for each month
- ✓ Download charts for reporting and analysis
- ✓ Bills are automatically added to the system - no manual uploading needed!



IoT Hardware that Just Works

We offer a variety of plug-and-play sensors that is easy to install, non-disruptive, and scalable.

Essential Sensors for Industrial and Commercial Buildings

Edgecom Energy offers a variety of IoT sensors to help you take control of your consumption. These are some of the core sensors for our IoT ecosystem. For more specific monitoring needs, contact us for more information.

Batteryless Amp Logger

Self-powered, cumulative amp logging.

- ✓ Lora-Enabled
- ✓ 3 Phase Meter
- ✓ Clamp-on Transformer



Hub 2.0

Connects your IoT sensors to the cloud.

- ✓ Lora-Enabled
- ✓ Long-distance coverage
- ✓ LTE Support



Pulse Counter

Converts pulses into utility data.

- ✓ Lora-Enabled
- ✓ IP76 Waterproof
- ✓ Up to 5 Years of Battery Life



Internal Air Quality Monitor

Indoor environmental monitoring.

- ✓ Lora-Enabled
- ✓ IP65 Rated
- ✓ USB-C Power Option





Let's Work Together

About Edgecom Energy

At Edgecom Energy, we empower commercial and industrial energy users to outsmart rising energy costs with an all-in-one energy management solution. Our innovative technology helps you turn costs into savings, data into insights, and your facility into a sustainable powerhouse with our AI-powered solution.

Contact Us



info@edgecom.ai



1-866-434-2999



<https://edgecom.ai/datatrack/>



5775 Yonge Street Suite 1902
Toronto, ON. M2M4J1

